



Monthly Newsletters- July 2018

Dear Parents and Caregivers,

**Welcome Back:** We are very pleased to welcome Alice back to our teaching team, and very thrilled that she and Ryan have added to our enrolments, with Oakley starting some hours in the Koru room.

**Retirement:** I am sad to inform you that we are on the countdown for Catherine's time with us at the centre. Catherine's final day will be on July 27<sup>th</sup>. We will miss Catherine very much when she goes- she is one of those very reliable teachers who quietly does the job in such an efficient manner that it is only when she isn't about that you realise what a gaping hole is created by her absence. We are also very grateful to Catherine for the close whanau support she has brought to the centre- all Catherine's daughters have worked for us at some stage and we have really enjoyed having her Invercargill grandchildren here attending the centre. We wish Catherine all the very best in her well-deserved retirement- and want her to know how much we have valued her expertise and skills, and the quiet calm manner she offered to all teams she worked with in her time at Surrey Park.

With the departure of Gayle, and soon, Catherine, we have advertised for replacements for these teachers. We will let you know as soon as we work out our staffing plan.

**Committee:** We also wish to acknowledge the incredible work that has been done by Liz Henry over the last 8 years. Liz has been a passionate advocate for our centre, and in her role as President of the committee has steered the centre through many ups and downs. With Alex well settled in school and Mackenzie about to start, Liz's time with us is drawing to an end. Liz will stay on the committee for the rest of the year- but as the day to day drop offs will cease I wish to thank Liz for all the ways she has flown the flag for Surrey Park ELC. The role Liz has played has been truly inspiring and we are very appreciative of all that has been done for us.

**Matariki Glow Party Night:** Thank you to all the families who came along to support our fun night. We hope you all enjoyed the evening and look forward to any suggestions you might have to help us make improvements for the next time. (I know I need a loud haler to make sure my fading voice can be heard in the crowd situation!!) Lorna, our Parent Support & communication's Officer on the Governance Committee has added an update on the back of this newsletter

**School Holidays:** We do ask that you let us know as soon as possible if you are going to be absent. We have less staff in the holidays and it is frustrating, and expensive, if we bring in relievers only to find out they are not needed.

**Clothing:**

- ✓ Please check the lost property- we have an excess of unclaimed clothes.
- ✓ Please bring gumboots and jackets for our daily winter excursions

**Sickness:** It seems we are having another winter with some very nasty bugs about. If your child is one of the unlucky ones to pick up these winter bugs, the doctors tell us it is best to make sure they are 100% before returning to the centre. Please contact the office if your child is needing to be away for an extended period of time so we can support you the best we can.

Regards  
Avin

An update from Lorna, our Parent Support & Communication's Officer on the Governance Committee;

You will have seen that we have raised \$1780 from the oyster raffle, and just this week \$\$\$\$ from our Couplands Fund raiser. We are very grateful for your support of these ventures. We were also delighted with the special Matariki party on June 16. It was an enchanting evening with the animal hunt, face painting, gloop, fire poi, planting seeds, a disco, a glow walkway and of course the delicious soup made by the children.

We are still planning our popular calendars for term 3. The teachers work hard to capture special moments or interests of your child for you to have on view all year round.

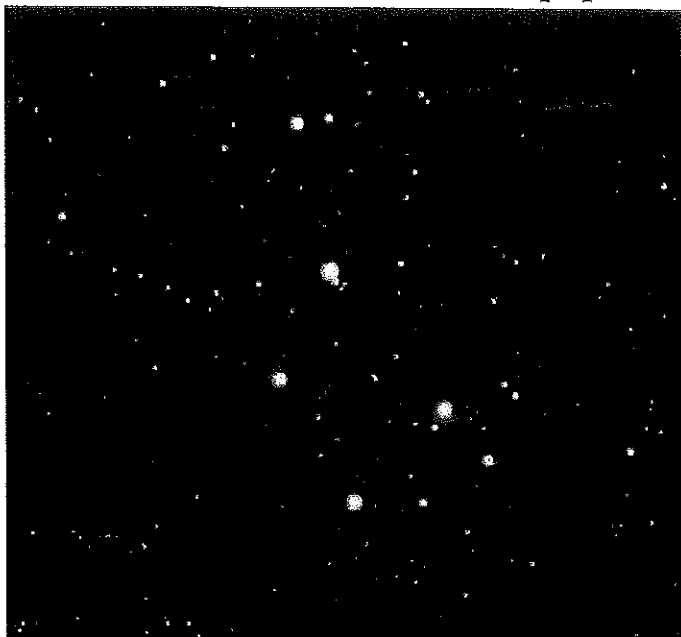
Term 4 will see the annual End of year raffle, with some great indulgences on offer for treats heading in to the festive season.

As summer approaches we are hoping to plan a further exciting whanau event. We would love for any, and all of those with an interest in helping out with either organising, donating to or sharing ideas to make these events happen, to let the office know.

We have a small group that meet together to plan these activities. We meet about every 2 months, and are a friendly bunch, so please come and join us. Many hands make light work as they say, and I know there will be some of you out there that have brilliant ideas to share or skills to share. Please let the teachers or the office know so we can utilise the strengths of our Surrey Park community.

Just to close I have added some information about the significance of Matariki.

**Twinkling in the winter sky just before dawn, Matariki (the Pleiades) signals the Māori New Year. Traditionally, it was a time for remembering the dead, and celebrating new life. In the 21st century, observing Matariki has become popular again.**



Matariki literally means the 'eyes of god' (mata ariki) or 'little eyes' (mata riki). According to myth, when Ranginui, the sky father, and Papatūānuku, the earth mother, were separated by their children, the god of the winds, Tāwhirimātea, became so angry that he tore out his eyes and threw them into the heavens.

*Regards - Lorna*